

# ForgeRock Identity Cloud Guide

## ON THIS PAGE

ForgeRock Identity Cloud Guide

About This Guide

Example Installation for This Guide

About Java Agents and the ForgeRock Identity Cloud

Enforce Policies From ForgeRock Identity Cloud

## ForgeRock Identity Cloud Guide

---

ForgeRock® Identity Platform serves as the basis for our simple and comprehensive Identity and Access Management solution. We help our customers deepen their relationships with their customers, and improve the productivity and connectivity of their employees and partners. For more information about ForgeRock and about the platform, see <https://www.forgerock.com>.

### About This Guide

This guide is for customers using an agent-based integration model, with ForgeRock Access Management on-premise, or another on-premise access management solution. The guide provides an example of how to transition from on-premise access management to ForgeRock Identity Cloud without changing the architecture of the agent-based model.

The examples in this document are based on the version of Identity Cloud that was available when Java Agent 5.9 was released. As Identity Cloud evolves, the examples in this document will be updated to reflect the changes.

### Example Installation for This Guide

Unless otherwise stated, examples assume the following installation:

- Java Agents are installed on <http://www.example.com:80/app> in the alpha realm. For more information, see [Installation Guide](#).
- ForgeRock Identity Cloud is installed with the default configuration described in the [Identity Cloud](#) docs.

Find the value of the following properties:

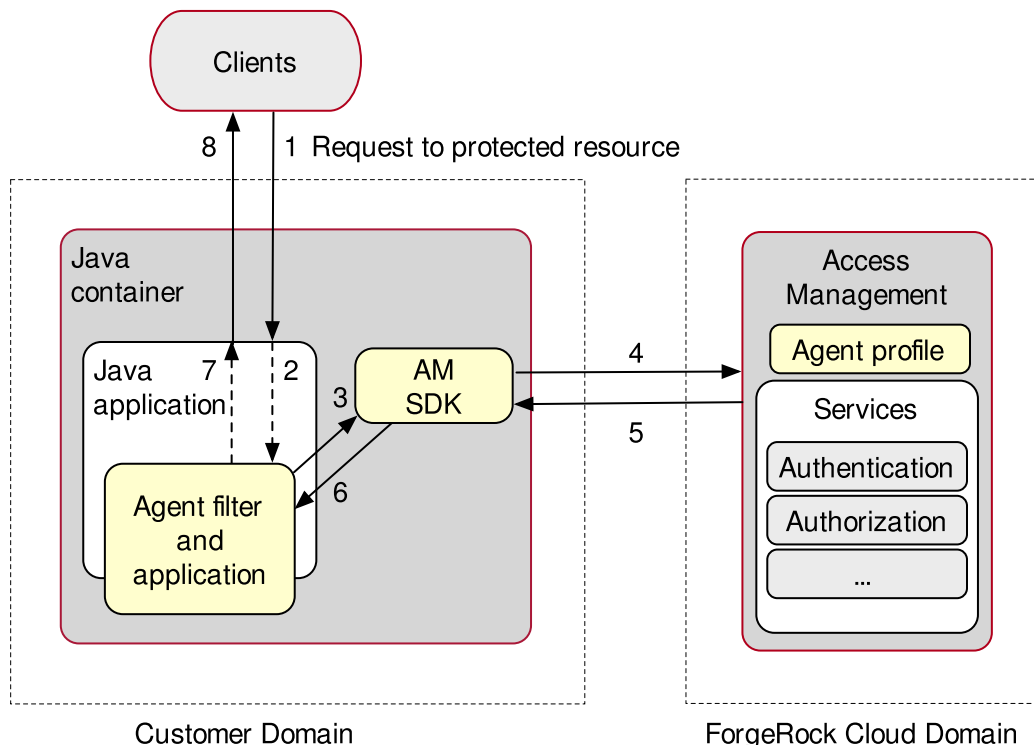
- The root URL of your ForgeRock Identity Cloud. This guide uses `https://tenant.forgeblocks.com:443`.
- The URL of the Access Management component of the ForgeRock Identity Cloud. This guide uses `https://tenant.forgeblocks.com:443/am`.
- The realm where you work. This guide uses `alpha`.

If you use a different configuration, substitute in the procedures accordingly.

## About Java Agents and the ForgeRock Identity Cloud

ForgeRock Identity Cloud simplifies the consumption of ForgeRock as an Identity Platform. However, many organizations have business web applications and APIs deployed across multiple clouds, or on-premise. This guide provides an example of how to use Java Agents with the ForgeRock Identity Cloud, without changing the architecture of the agent-based model.

The following image illustrates the flow of an inbound request to a website, through a Java Agent, and the Java Agent's interaction with ForgeRock Identity Cloud to enforce resource-based policies.




For information, see the [Identity Cloud](#) docs.

## Enforce Policies From ForgeRock Identity Cloud


This example sets up ForgeRock Identity Cloud as a policy decision point for requests processed by Java Agents. For more information about Java Agents, see the [User Guide](#).

## 1. Set up Identity Cloud:

- a. Install Identity Cloud with the default configuration in [Example Installation for This Guide](#), as described in the [ForgeRock Identity Cloud](#) docs.
- b. Log in to the ForgeRock Identity Cloud as an administrator.
- c. Make sure that you are managing the `alpha` realm. If not, click the current realm at the top of the screen, and switch to the `alpha` realm.
- d. In the platform console, go to  Identities > Manage > Alpha realm - Users, and add a new user with the following values:
  - **Username** : demo
  - **First name** : demo
  - **Last name** : user
  - **Email Address** : demo@example.com
  - **Password** : Ch4ng3!t

## 2. Set up Access Management in Identity Cloud:

- a. Go to the alpha realm in the AM console:
  - i. In the platform console, click Native Consoles > Access Management. The Access Management console is displayed.
  - ii. Make sure that you are managing the `alpha` realm. If not, click the current realm at the top of the screen, and switch to the `alpha` realm.
- b. Add a Java Agent:
  - Click Applications > Agents > Java, and add an agent with the following values:
    - **Agent ID** : java-agent
    - **Agent URL** : http://www.example.com:80/app
    - **Server URL** : https://tenant.forgeblocks.com:443/am
    - **Password** : password
  - On the AM Services tab, set the following values:
    - **AM Conditional Login URL** : `|?realm=/alpha`  
Note the `|` at the start of the URL.
    - **Policy Evaluation Realm** : `/alpha`
    - **Policy Set** : PEP

c. Click  Authorization > Policy Sets, and add a new policy set with the following values:

- **Id** : PEP
- **Resource Types** : URL

d. In the policy set, add a policy with the following values:

- **Name** : PEP-policy
- **Resource Type** : URL
- **Resource pattern** : `::/*/*`
- **Resource value** : `::/*/*`

This policy protects all web pages.

e. On the **Actions** tab, add actions to allow HTTP GET and POST .

f. On the **Subjects** tab, remove any default subject conditions, add a subject condition for all Authenticated Users .

3. Set up Java Agents:

a. Make sure that the server where you plan to install the agent is shut down.

b. Create a text file for the agent password, and protect it. For example, use commands similar to these, changing the password value and path:

1. Unix
2. Windows

```
$ cat > /tmp/pwd.txt
password
CTRL+D

$ chmod 400 /tmp/pwd.txt
```

```
C:> type > pwd.txt
password
CTRL+Z
```

In Windows Explorer, right-click the password file, for example `pwd.txt` , select Read-Only, and then click OK.

c. Using [Installation Guide](#), install Java Agents with the following values:

- **AM server URL** : `https://tenant.forgeblocks.com:443/am`
- **Agent URL** : `http://www.example.com:80/app`
- **Agent profile name** : `java-agent`

- **Agent profile realm** : /alpha
- **Agent profile password** : /tmp/pwd.txt

d. Start the Java Agent.

4. Test the setup:

- a. Log out of Identity Cloud, and clear any cookies.
- b. Go to <http://www.example.com:80/app>. The Identity Cloud login page is displayed.
- c. Log in to Identity Cloud as user `demo` , password `Ch4ng31t` , to access the web page protected by the Java Agent.